

# RCW-360 2G/4G/WIFI USER MANUAL

**Elitech cloud login: [www.i-elitech.com](http://www.i-elitech.com).**

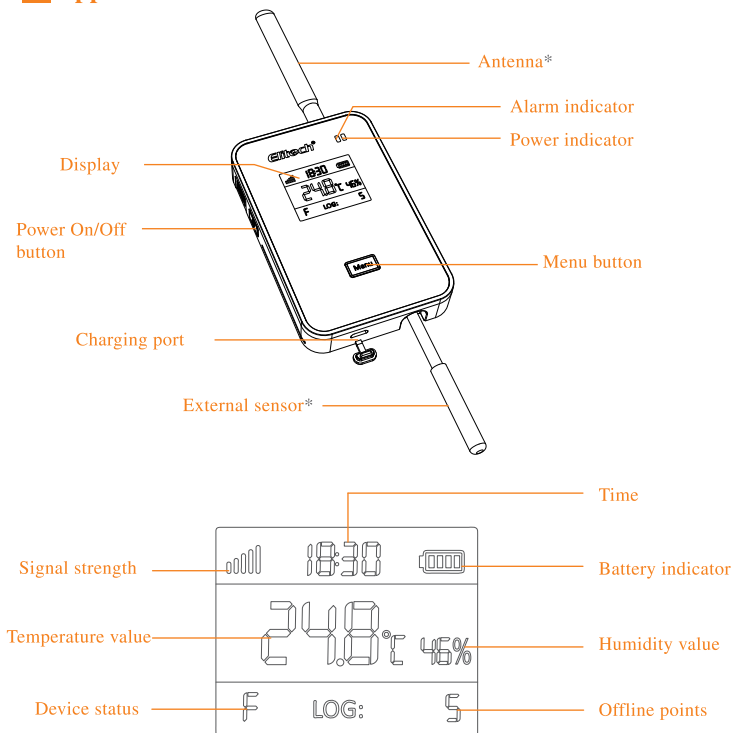


iOS APP  
Scan the QR code or  
download on the App Store



Android APP  
Scan the QR code or  
download on the Google Play

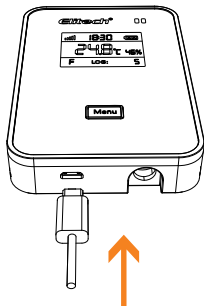
# 1 Appearance



\*The External sensor and Antenna on the product picture shown above is for illustration purpose only and may vary from the actual product.

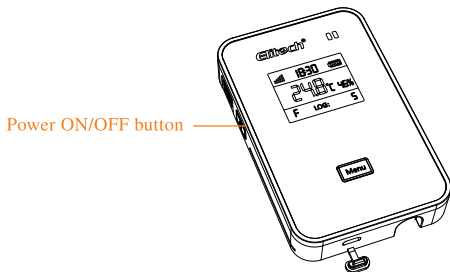
## 2 Charging

Use a cable to connect USB port to the power adapter and plug the adapter to a power supply source. During charging, the device's Power indicator light will turn to green. When the device is fully charged, the green Power indicator light will turn OFF.



## 3 ON/OFF

- 1) ON: Press and hold the Power ON/OFF button for 3 seconds until you hear a beep sound. The screen will light on and the device is turned ON successfully
- 2) OFF: Press and hold the Power ON/OFF button for 3 seconds until you hear a beep sound. The screen will close and the device is turned OFF successfully



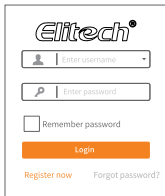
## 4 Elitech App

### 1. Download APP:

Please scan the QR code on the front of the manual or search 'Elitech' on the App store or Google Play to download the app.

### 2. Login

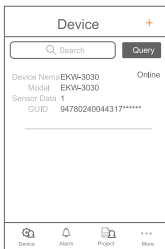
Register and login to your account.



The login screen features the Elitech logo at the top. Below it are two input fields: one for 'Enter username' with a person icon and one for 'Enter password' with a key icon. A checkbox labeled 'Remember password' is positioned below the password field. An orange 'Login' button is centered at the bottom. At the very bottom, there are two links: 'Register now' and 'Forgot password?'.

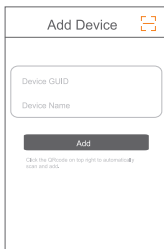
## 6 Add device

### Device: SIM Card Version



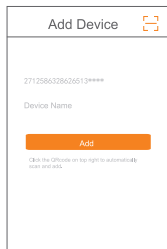
The 'Device' screen shows a search bar and a 'Query' button. Below, it displays device information: 'Device Name: EKW-3030', 'Model: EKW-3030', 'Sensor Data: 1', and 'GUID: 94780240044317\*\*\*\*\*'. A bottom navigation bar includes icons for 'Device', 'Alarm', 'Project', and 'More'.

① Click '+'.



The 'Add Device' screen has a QR code icon in the top right. It contains two input fields: 'Device GUID' and 'Device Name'. An orange 'Add' button is centered below the fields. A small note at the bottom reads: 'Click the QRcode on top-right to automatically scan and add.'.


② Click and scan the QR code on the back of the device.

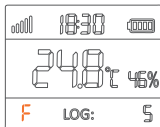


The 'Add Device' screen shows the device has been added, displaying 'Z712586328626513\*\*\*\*' and 'Device Name'. An orange 'Add' button is centered below the text. A small note at the bottom reads: 'Click the QRcode on top-right to automatically scan and add.'.

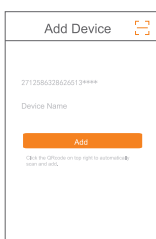
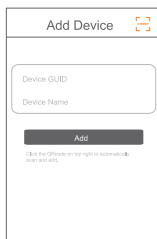
③ Click 'Add' and the device will be added.



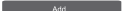

## Device: WiFi version

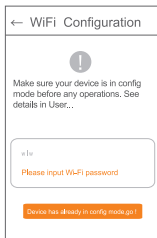
1. Connect your mobile phones with your preferred WiFi/WLAN network.
2. Open the Elitech App.
3. Press and the hold menu button  for 5 seconds until segment screen displays 'F', which means the device is now ready for wifi configurations.



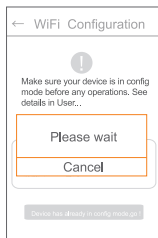
4. Please follow the steps 1 to 8 below for WiFi configurations:



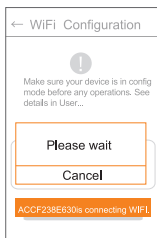
- ① Click '+'. 
- ② Click and scan the QR code on the back of the device. 
- ③ Click 'Add' and the device will be added. 
- ④ Click 'OK'. 



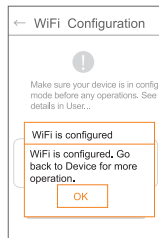
⑤ Enter WiFi password.



⑥ Wait for WiFi settings.



⑦ Wait for WiFi settings.



⑧ Click 'OK' to finish all WiFi configuration procedures.

5. If the configuration fails or you want to change to other WiFi network, please repeat steps 3. and 4. to re-configure.

6. When 'F' icon disappeared, WiFi is configured successfully.

## 7 Elitech Cloud

### 1. Login Cloud Portal

- Please type in this URL: [www.i-elitech.com](http://www.i-elitech.com) into any web browser to access the Elitech Cloud portal.
- Register and log into your account for more operations and functions.
- Click 'Help' from the Cloud Portal page to obtain more Cloud and App operation instructions.

### 2. Top up SIM card credit

If your device is SIM version, please top up your SIM card directly on our Elitech APP.

## 8 Technical specification

Power adapter	5V/1A
Temperature measuring range	-20 C ~ + 70 C (internal), -40 C ~ +80 C (external)
Temperature accuracy	±0.5°C
Temperature resolution	0.1°C
Humidity measuring range	0~100%RH
Humidity accuracy	±5%RH
Humidity resolution	1%RH
Memory capacity	32,000 points
Logging interval	5 minutes to 24 hours. Default interval is 30 minutes
Battery	Rechargeable lithium battery
Duration	Approximately 3 months at 1 hour upload (@25 C)
Protection level	Device with internal sensor: IP65; Device with external sensor: IP64
Sensor type	Internal: Temperature-humidity-combined sensor; External: Single temperature sensor or temperature-humidity-combined sensor;
LED indicator	Status indicator, Power indicator
Display	Segment display
Communication interface	GPRS(2G version)/4G(4G version)/WiFi(WiFi version)
Alarm mode	Buzzer alarm, email alert, app notifications
Buttons	Power ON/OFF button, Menu button



*Elite of technology*

Elitech Technology, Inc.  
1551 McCarthy Blvd Suite 112 Milpitas CA 95035  
Sales Support: sales@e-elitech.com  
Tech Support: info@e-elitech.com  
<http://www.elitechlog.com>

V5.1